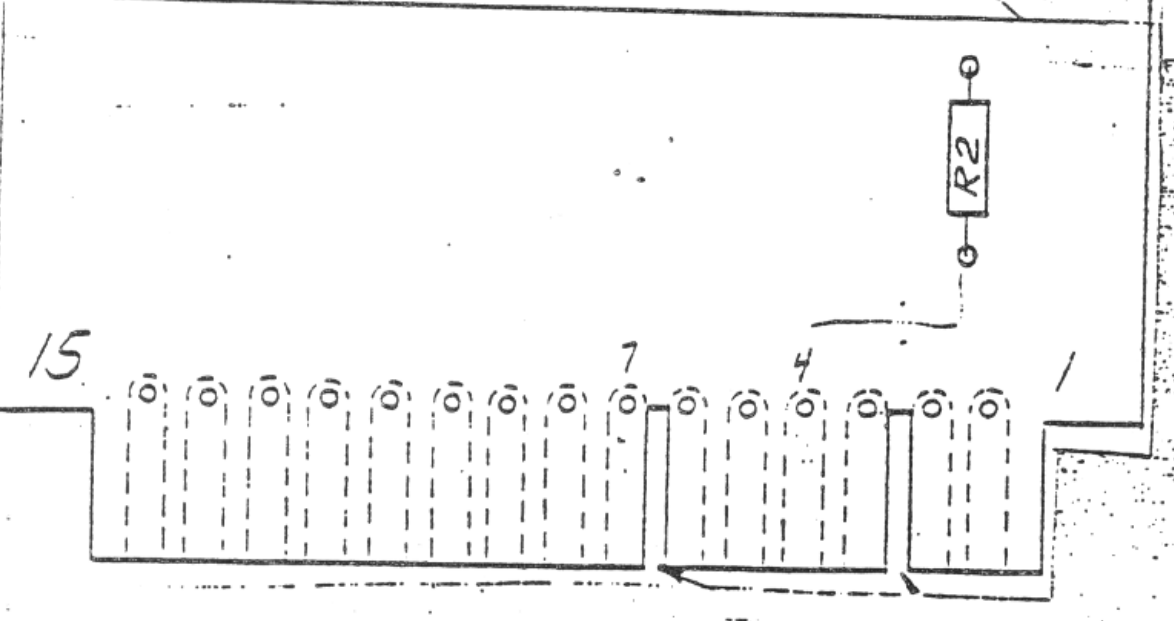
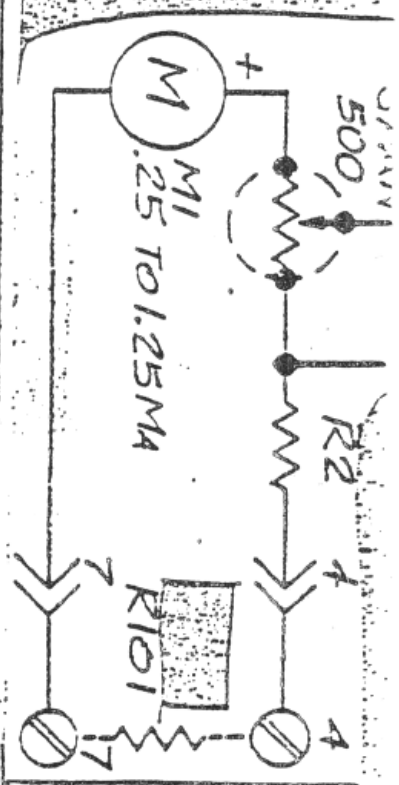
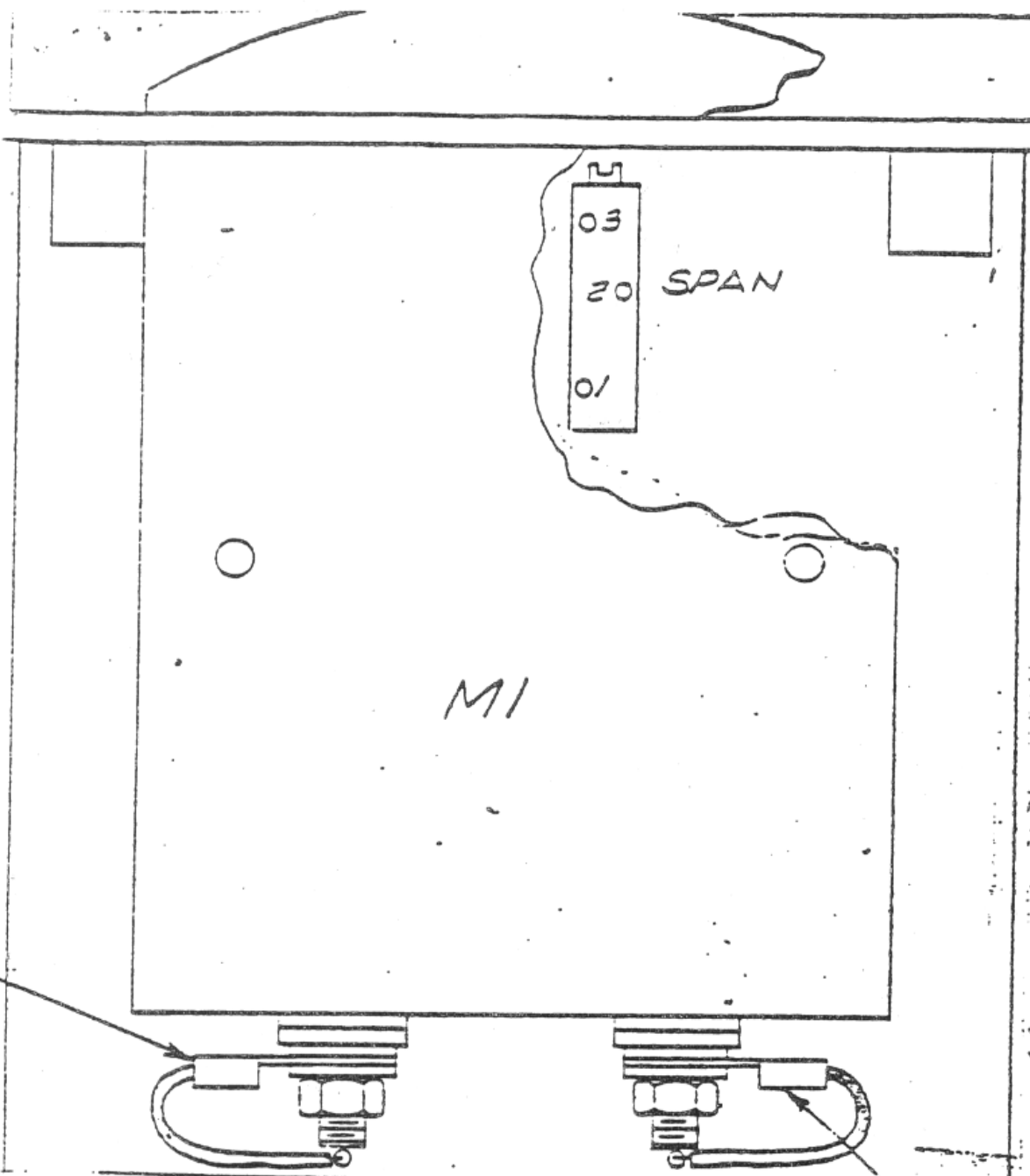


217-751-00

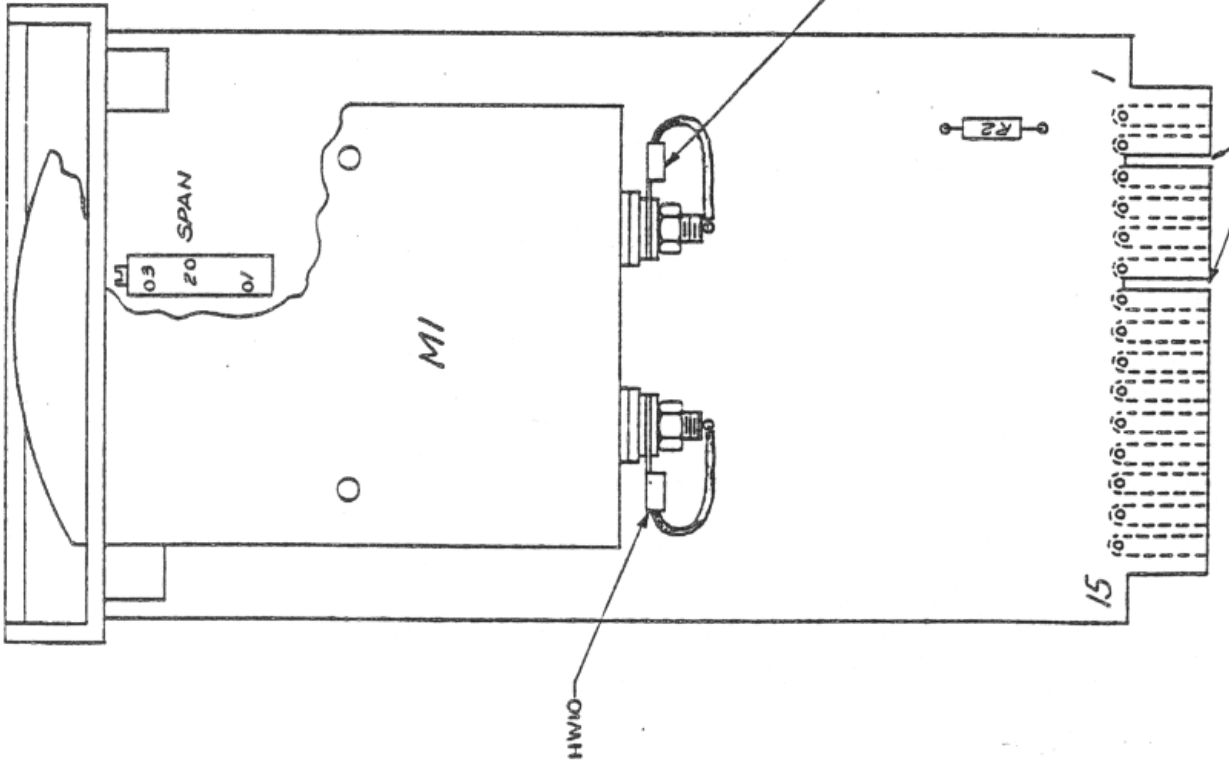
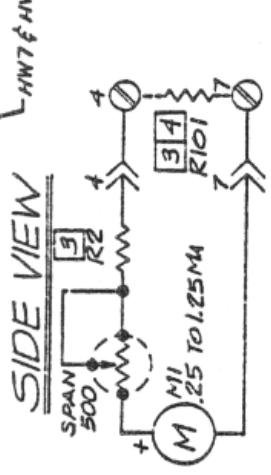
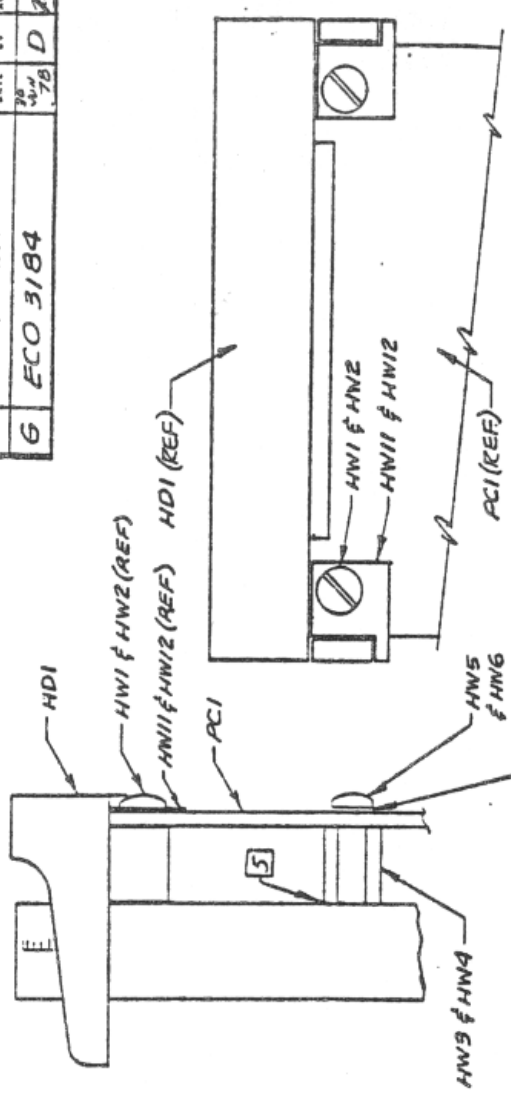
The Moore Industries meter module, designated the MMM, is a 2½ inch sealed meter movement mounted vertically on a printed circuit card. The standard output is a linear 0 to 100% for a 4 to 20 milliampere input. Special scales are available, and the table shows the resistance values used with optional ranges. The resistor designated R101 is not mounted to the pc card, but is located on the terminals at the rear of the card cage.

The meter movement is placed in series with a fixed resistor designated R2, and a 500 ohm potentiometer that together form a divider network for range selection. The meter movement has a mechanical zero adjustment located in the rear, and the potentiometer provides the adjustment for the full scale indication of the selected range.

INPUT	OUTPUT	R2 VALUE	R101 VALUE
1-5 ma	0-100%	634 ohm	200 ohm
4-20 ma	0-100%	634 ohm	50 ohm
10-50 ma	0-100%	634 ohm	20 ohm
1-5 vdc	0-100%	3.74 K	not used
4-20 ma	0-20 ma	7.5 K	not used
10-50 ma	0-50 ma	2.26 K	not used



REV	DESCRIPTION	DATE	BY	AP
6	ECO 3184	7/20/78	D	D



1. ADD HW13 IF NECESSARY FOR PROPER ALIGNMENT OF METER AND HANDLE.
2. MOUNT RIO1 ON TERMINALS 4 & 7 OF CARD RACK POS'N TERM. BLOCK.
3. SEE LIST OF MATERIAL FOR PART NO. AND USAGE.
4. ALL LEADS & TERMINALS MUST BE SOLDERED TO PADS.
5. ALL WIRING 22 AWG STRANDED.

ITEM	PART NUMBER	PART NAME	LIST OF MATERIALS	P.L.I. P/N	REFERENCE DESIGNATION
1	MI	METER	MI .25 TO 1.25M4		
2	R1	RESISTOR	34 RIO1		
3	R2	RESISTOR			
4	HW1	WIRE			
5	HW2	WIRE			
6	HW11	WIRE			
7	HW12	WIRE			
8	HW5	WIRE			
9	HW6	WIRE			
10	HW7	WIRE			
11	HW8	WIRE			
12	HW9	WIRE			
13	HW10	WIRE			
14	HW13	WIRE			
15	KEY	KEY			

MOORE INDUSTRIES INC.
VAN NUYS • CALIF.
P.C. BOARD ASSEMBLY
PLUG-IN
M. M. M.
DO NOT SCALE DRAWING
217-551-006

RETURN PROCEDURES

To return equipment to Moore Industries for repair, follow these four steps:

1. Call Moore Industries and request a Returned Material Authorization (RMA) number.

Warranty Repair –

If you are unsure if your unit is still under warranty, we can use the unit's serial number to verify the warranty status for you over the phone. Be sure to include the RMA number on all documentation.

Non-Warranty Repair –

If your unit is out of warranty, be prepared to give us a Purchase Order number when you call. In most cases, we will be able to quote you the repair costs at that time. The repair price you are quoted will be a "Not To Exceed" price, which means that the actual repair costs may be less than the quote. Be sure to include the RMA number on all documentation.

2. Provide us with the following documentation:
 - a) A note listing the symptoms that indicate the unit needs repair
 - b) Complete shipping information for return of the equipment after repair
 - c) The name and phone number of the person to contact if questions arise at the factory
3. Use sufficient packing material and carefully pack the equipment in a sturdy shipping container.
4. Ship the equipment to the Moore Industries location nearest you.

The returned equipment will be inspected and tested at the factory. A Moore Industries representative will contact the person designated on your documentation if more information is needed. The repaired equipment, or its replacement, will be returned to you in accordance with the shipping instructions furnished in your documentation.

WARRANTY DISCLAIMER

THE COMPANY MAKES NO EXPRESS, IMPLIED OR STATUTORY WARRANTIES (INCLUDING ANY WARRANTY OF MERCHANTABILITY OR OF FITNESS FOR A PARTICULAR PURPOSE) WITH RESPECT TO ANY GOODS OR SERVICES SOLD BY THE COMPANY. THE COMPANY DISCLAIMS ALL WARRANTIES ARISING FROM ANY COURSE OF DEALING OR TRADE USAGE, AND ANY BUYER OF GOODS OR SERVICES FROM THE COMPANY ACKNOWLEDGES THAT THERE ARE NO WARRANTIES IMPLIED BY CUSTOM OR USAGE IN THE TRADE OF THE BUYER AND OF THE COMPANY, AND THAT ANY PRIOR DEALINGS OF THE BUYER WITH THE COMPANY DO NOT IMPLY THAT THE COMPANY WARRANTS THE GOODS OR SERVICES IN ANY WAY.

ANY BUYER OF GOODS OR SERVICES FROM THE COMPANY AGREES WITH THE COMPANY THAT THE SOLE AND EXCLUSIVE REMEDIES FOR BREACH OF ANY WARRANTY CONCERNING THE GOODS OR SERVICES SHALL BE FOR THE COMPANY, AT ITS OPTION, TO REPAIR OR REPLACE THE GOODS OR SERVICES OR REFUND THE PURCHASE PRICE. THE COMPANY SHALL IN NO EVENT BE LIABLE FOR ANY CONSEQUENTIAL OR INCIDENTAL DAMAGES EVEN IF THE COMPANY FAILS IN ANY ATTEMPT TO REMEDY DEFECTS IN THE GOODS OR SERVICES. BUT IN SUCH CASE THE BUYER SHALL BE ENTITLED TO NO MORE THAN A REFUND OF ALL MONIES PAID TO THE COMPANY BY THE BUYER FOR PURCHASE OF THE GOODS OR SERVICES.

ANY CAUSE OF ACTION FOR BREACH OF ANY WARRANTY BY THE COMPANY SHALL BE BARRED UNLESS THE COMPANY RECEIVES FROM THE BUYER A WRITTEN NOTICE OF THE ALLEGED DEFECT OR BREACH WITHIN TEN DAYS FROM THE EARLIEST DATE ON WHICH THE BUYER COULD REASONABLY HAVE DISCOVERED THE ALLEGED DEFECT OR BREACH, AND NO ACTION FOR THE BREACH OF ANY WARRANTY SHALL BE COMMENCED BY THE BUYER ANY LATER THAN TWELVE MONTHS FROM THE EARLIEST DATE ON WHICH THE BUYER COULD REASONABLY HAVE DISCOVERED THE ALLEGED DEFECT OR BREACH.

RETURN POLICY

For a period of thirty-six (36) months from the date of shipment, and under normal conditions of use and service, Moore Industries ("The Company") will at its option replace, repair or refund the purchase price for any of its manufactured products found, upon return to the Company (transportation charges prepaid and otherwise in accordance with the return procedures established by The Company), to be defective in material or workmanship. This policy extends to the original Buyer only and not to Buyer's customers or the users of Buyer's products, unless Buyer is an engineering contractor in which case the policy shall extend to Buyer's immediate customer only. This policy shall not apply if the product has been subject to alteration, misuse, accident, neglect or improper application, installation, or operation. THE COMPANY SHALL IN NO EVENT BE LIABLE FOR ANY INCIDENTAL OR CONSEQUENTIAL DAMAGES.



WORLDWIDE • www.miinet.com

United States • info@miinet.com Tel: (818) 894-7111 • FAX: (818) 891-2816	Belgium • info@mooreind.be Tel: 03/448.10.18 • FAX: 03/440.17.97	China • sales@mooreind.sh.cn Tel: 86-21-62491499 • FAX: 86-21-62490635
Australia • sales@mooreind.com.au Tel: (02) 8536-7200 • FAX: (02) 9525-7296	The Netherlands • sales@mooreind.nl Tel: (0)344-617971 • FAX: (0)344-615920	United Kingdom • sales@mooreind.com Tel: 01293 514488 • FAX: 01293 536852